

FOXTAM Range of Current Transformers

FEATURES

- MOULDED CASE
- PRIMARY WOUND VERSIONS
- BUS-BAR VERSIONS
- DIN RAIL MOUNTED VERSIONS
- SUMMATION CT's
- SPLIT CORE CT's
- TRIPLE THREE PHASE CT's
- SLIDING SEALABLE TERMINAL COVERS
- P1 & P2 PRIMARY DESIGNATION WITHIN MOULDING
- S1 & S2 SECONDARY DESIGNATION WITHIN MOULDING
- 1 AMP & 5 AMP SECONDARIES
- CLASS 1 AS STANDARD (CLASS 0.5 & 0.2 ON REQUEST)

SPECIFICATIONS

Compliance:	IEC185, BS7626, BSED 60044-1, IEC 60044-1
CEmarked:	Yes
Rated system voltage:	Max 720V continuous
Insulation:	Max 3KV for 1 min
Frequency range:	50-60Hz (400Hz on requested)
Ambient temperature range:	-30°C to 85°C (Triple Three Phase & Split Core CT's max 80°C)
Continuous current:	1.2 x rated current

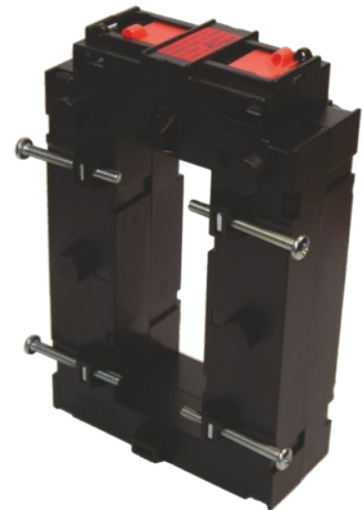


FOX105.38

Moulded case rectangular current transformers, for mounting on vertical bus-bars with primary currents from 800 Amps to 4000 Amps. With built in sliding sealable terminal covers.

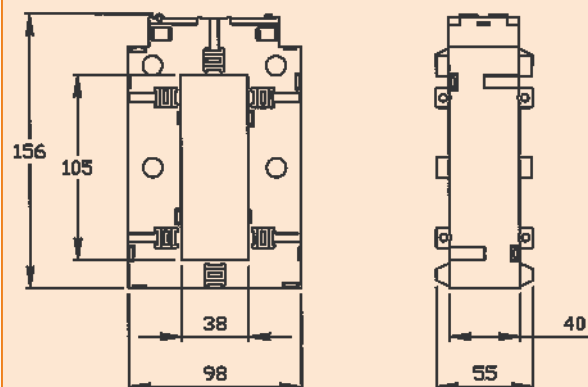
FEATURES

- BUS-BAR MOUNTED
- BUILT IN SLIDING SEALABLE TERMINAL COVERS
- TRANSFORMER SIZE 148x98mm
- MAX BUS-BAR SIZE 105x38mm
- 1 AMP OR 5 AMP SECONDARIES



P/No.	CLASS	VA
FOX105.38 800/5	1	15
FOX105.38 1000/5	1	15
FOX105.38 1200/5	1	15
FOX105.38 1500/5	1	15
FOX105.38 1600/5	1	15
FOX105.38 2000/5	1	15
FOX105.38 2500/5	1	15
FOX105.38 3000/5	1	15
FOX105.38 4000/5	1	15

FOX105.38 DIMENSIONS



All of the above ratios are available as Class 0.5 and Class 0.2 to special order; please consult our sales office.